

Botswana Adventure - Standard

10 nights / 11 days

Starts Maun / Ends Victoria Falls, Zimbabwe



From US \$ 4040 per person

Private Bag 0718, Maun, Botswana

Tel: +267 7231 1321 Email: info@safarispecialists.net

Botswana is our home
Safaris are our passion



Day	Location	Accommodation	Transfers / Activities	Meals
1	Makgadikgadi, Boteti area	Meno A Kwena , Safari tents with adjacent bathroom	Upon arrival in Maun you are met by a Safari Specialists representative and assisted to the scheduled road transfer to Meno A Kwena camp. Settle into camp and afternoon hide game viewing	Snack/lunch, D & SB
2	Makgadikgadi	Meno A Kwena Pans sleep out *Dry season only (May - October weather permitting)*	Drive out to the pans (4 hours), picnic lunch, looking for the meerkat and photography fun on the pans. Overnight sleep out on the pans in the dry season only.	B, L, D & SB
3	Makgadikgadi	Meno A Kwena	Return from the pans. Afternoon San cultural activity, time permitting.	B, L, D & SB
4	Moremi area, Khwai Community Concession	Sango Safari Camp Safari tents	After breakfast you transfer by road back to Maun to connect to your light aircraft flight to Sango. Lunch, if time permits and afternoon activity	B, L, D & SB
5	Moremi area, Khwai Community Concession	Sango Safari Camp	Morning and afternoon activity from a choice of: day and night game drives in Khwai Community area/Moremi Game Reserve, mokoro excursions, guided walks	B, L, D & SB
6	Chobe National Park	Chobe Under Canvas Walk in luxury safari camping tent	After breakfast and a possible morning activity (flight time dependant), light aircraft flight transfer to Kasane airport then road transfer into Chobe National Park and settle into camp. Afternoon game activity (time permitting)	B, L, D & SB
7	Chobe National Park	Chobe Under Canvas	Game drives in Chobe National Park & Chobe River cruise	B, L, D & SB
8	Victoria Falls, Zimbabwe	Ilala Lodge Standard room	After breakfast and a possible morning activity, road transfer across the border and into Zimbabwe and on to Ilala Lodge. Afternoon at leisure or optional activities at own account	B only

Safari Specialists – Botswana Adventure – Standard - 10 nights / 11 days

9	Zimbabwe	Pioneers Camp Luxury safari tent	After breakfast, road transfer to Pioneers camp. Afternoon activity	B, L, D, SB
10	Zimbabwe	Pioneers Camp	A selection of activities to choose from: Scheduled game drives morning / afternoon, boat cruises and canoeing safari on the Zambezi River. Daily scheduled shuttle to/from Victoria Falls town.	B, L, D & SB
11	Safari Ends Victoria Falls, Zimbabwe	END OF ARRANGEMENTS	After breakfast and a possible morning activity (flight time dependant) road transfer to Victoria Falls Airport for your onward travel arrangements.	B

B=breakfast / L=lunch / D=dinner / SB=selected beverages

Highlights

- Game drives and guided walks in the Makgadikgadi area
- Hide game viewing
- Pans sleep out (seasonal approx mid April – mid October)
- Game drives in the Khwai & Moremi areas
- Chobe River cruise and Chobe National Park game drives
- Victoria Falls, Zambian side
- Game drives, canoeing and boating in the Upper Zambezi National Park



Cost of the safari 2015/2016

Season	Cost per person sharing	Single supplement*	Average nightly rate per person
01 - 30 November 2015 **	US \$ 4520 per person	US \$ 1580	US \$ 452 per person per night
01 – 31 December 2015 *	US \$ 4040 per person	US \$ 1120	US \$ 404 per person per night
01 January – 02 February 2016 ***	Contact us for a tailor made safari option as Chobe Under Canvas is closed		
03 February – March 2016 **	US \$ 4170 per person	US \$ 710	US \$ 417 per person per night
April – June 2016	US \$ 4960 per person	US \$ 1720	US \$ 496 per person per night
July – October 2016	US \$ 5880 per person	US \$ 1980	US \$ 588 per person per night
November 2016	US \$ 4960 per person	US \$ 1720	US \$ 496 per person per night

Please Note:

- **Please note that activities at Meno A Kwena are seasonal for wet and dry seasons please discuss with your consultant**
- *** Christmas Surcharges apply** at Sango Safari Camp 20-31 December \$90 US per person per night between these dates and Christmas Surcharge on specific days 24/25/26 and 31 December at Pioneer Camp \$35 US per person per night
- ****Pioneers Camp has a pay 2/stay 3 special offer** valid for travel Nov – 15 December 2015 and 4 January – 20 March 2016, discuss options with your consultant to add on the extra night.
- *****Chobe Under Canvas is closed 1 January – 2 February inclusive, please contact us for alternatives**
- Please note that where a booking crosses over 2 different rate periods e.g. Oct & Nov, neither rate is applicable – please request a special quote
- The above rate is subject to change due to major currency fluctuations, fuel surcharges and increases in National park fees
- Subject to availability at the time of booking
- Single supplement is for accommodation only, applicable when travelling with more than 2 guests and excludes a flying surcharge for guests travelling solo – rate available on request

Safari Specialists – Botswana Adventure – Standard - 10 nights / 11 days

- Please note: Transfers to Meno A Kwena leave Maun between 12:00 – 14:00 and leave the camp to depart for Maun between 09:00 – 10:30 to accommodate Air Botswana and SAA flights in and out of Maun. Any guests arriving or departing later will need to pay an additional US\$300.00 per transfer for the additional vehicle and guide



Travel for Impact – Responsible Travel

By booking this itinerary, you donate USD\$2 for every night of travel per person on the booking. Your donation goes to **Travel for Impact (TFI)** and ensures that your safari has a meaningful impact on the people who live locally. For more information on giving back to your chosen destination of travel, visit www.travelforimpact.com

Inclusions	Exclusions
<ul style="list-style-type: none"> 3 nights Meno A Kwena, Boteti River, Makgadikgadi area including meals, selected beverages, laundry service, activities and park fees – You can book either the 3 nights Pans and Meerkat experience (dry season only – see itinerary below) or stay with the normal camp routine including : Guided walks on the Boteti, game drive in the Makgadikgadi area & sleep outs on the pans (dry season only) 2 nights Sango Safari Camp/Khwai area outside Moremi Game Reserve (includes all meals, a selection of beverages and activities/concession fees – game drives and night drives/guided walks in Khwai Community area, seasonal mokoro excursions) 2 nights Chobe Under Canvas, Chobe National Park including meals, selected beverages, limited laundry service (weather dependent), activities/current corresponding park fees – morning and afternoon game drives in Chobe National Park, Chobe River Cruises 1 nights Ilala Lodge, Victoria Falls/Zimbabwe including bed and breakfast 2 nights Pioneers Camp, Upper Zambezi National Park, Zimbabwe. Includes all meals, local drinks, laundry, and scheduled game drives morning / afternoon with applicable park fees. Scheduled boat cruise on Zambezi River. Scheduled canoeing safari on River. Daily shuttle to/from Vic Falls town (maximum 2/daily on a shuttle basis ie 08h30 from Pioneers to Victoria Falls town and return at 15h30 Victoria Falls Town -Pioneers). Road Transfer: Maun – Meno A Kwena – Maun * scheduled times Light aircraft flight: Maun – Sango – Kasane airport Road transfer: Kasane airport – Chobe Under Canvas – Ilala lodge – Pioneers camp – Victoria Falls airport 	<ul style="list-style-type: none"> Increases in National Park fees for 2016 – package calculated on P70 per person per day entry fee in Chobe National Park Additional activities and transfers in Victoria Falls Lunch and dinner at Ilala lodge as well as any beverages while at Ilala Lodge All extras such as telephone calls/curio shopping/postage and so forth Premium imported wines, champagnes, spirits & liqueurs where drinks are included Personal spending International flights & taxes Visa if required for travel in Botswana and Zimbabwe Vaccinations All Travel Insurances Errors and omissions

DETAILED ITINERARY:

Day 1, 2 & 3: MENO A KWENA, overlooking Boteti River, Makgadikgadi area (fully inclusive)

**Travel time: Maun – Meno a Kwena
Approximately 2 hour road transfer**

Upon arrival in Maun, you will be met by a Safari Specialists representative and assisted to your road transfer to Meno A Kwena. There is a light snack lunch that is offered on route while driving and refreshments offered on arrival at the camp.

Here you spend 3 nights on a fully inclusive basis on the **Salt Pan and Meerkat Experience (dry season only)** **OR you can enjoy the normal camp experience**, please discuss with your consultant at the time of booking, subject to guide availability and weather.

Meno A Kwena, meaning tooth of the crocodile, borders Makgadikgadi National Park in close proximity to Nxai Pan National Park. The camp is situated on tribal land and has been built on a cliff edge overlooking the Boteti River, which is flowing again after a significant dry period.

Safari Specialists – Botswana Adventure – Standard - 10 nights / 11 days

The rustic camp is built in the tradition of eastern African tented camps, simple yet personal with attention to rich detail featuring many interesting artefacts and photographs on display in the main lodge. Meno A Kwena offers seven meru-style safari tents, simply furnished with comfortable bedding and hanging space. Separate to the each tent are private open air bathrooms with a traditional bucket shower (filled with piping hot water for daily showers) and a flush toilet. Each tent features a private sitting area, which offers a beautiful view over the river bed. The main lodge has a dining area, bar and lounge with small library. A covered seating area at the edge of the escarpment is popular, providing guests with a breathtaking view over the Boteti River that attracts many zebra and wildebeest herds during the dry months. There is a small plunge pool built with natural rocks and a game viewing hide which offers a close yet safe view across the river.



Activities at Meno A Kwena include guided walks, game drives into the Makgadikgadi Pans National Park, game viewing from the floating Hide at camp, and cultural interaction with the local community. For stays of 3 nights or longer and on request full day trips with picnic lunch can be arranged to Makgadikgadi & Nxai Pan National Park. Seasonal overnight camping excursions to the salt pans are also available on request. Any day trip or overnight trip needs to be booked in advance.

Meno A Kwena's informal atmosphere makes for a very relaxing stay where less structured activities are the norm and you combine a cultural, desert and wildlife experience in one. The camp is ideally situated on the bank of the Boteti River where guests can relax and enjoy seasonal game viewing from the comfort of their own room or the floating hide.

Please note that due to the scheduled road transfer times, Meno A Kwena don't offer an activity on the afternoon of arrival but rather give guests the opportunity to spend the afternoon in camp to take advantage their unique location.

SALTPAN & MEERKAT EXPERIENCE (ON REQUEST WEATHER PERMITTING)

This trip is limited to minimum 2, maximum 4 guests at a time, otherwise by special arrangement.

Day 1: Overnight Meno A Kwena

Arrive camp, afternoon activity in the floating wildlife viewing hide

Day 2: Overnight Makgadikgadi Pans under the stars

Leave camp after breakfast for the four hour drive to the saltpan shoreline for a picnic lunch. Afternoon spent looking for meerkats and then head out to the salt pans before sunset for some photographic fun. Set up camp, sundowners, BBQ supper then sleeping in bedrolls under the stars. A basic camp is provided, (bedrolls, linen, long drop toilet tent, tables & chairs) and supplies (picnic lunch, supper & breakfast), are carried on this trip to the Makgadikgadi Salt pans.

Day 3: Overnight Meno A Kwena

Wake up before sunrise, breakfast then after packing up camp to the pan shoreline to watch meerkats sunning themselves before they move on to forage. Return to camp for lunch and siesta.

Afternoon wildlife viewing from the floating hide or Bushman walking experience.

AREA DESCRIPTION – MAKGADIKGADI AND BOTETI

Although this area was also once part of the great super lake, it is quite different in character to the Makgadikgadi Salt Pans. To the west of Nwetwe Pan lies open grassland, which is home to a wide range of animals as it incorporates both desert and riverine habitats. The grasslands give rise to a dense riverine forest on the banks of the Boteti River. During periods of above average rainfall, the Boteti River is one of the few drainage systems that carry the Okavango floodwaters out of the delta into the Kalahari Desert. The Boteti River lies right in the middle of these great vast thirst lands where water is priceless thus attracting some of Africa's last remaining great wildlife populations.

From the Kalahari side on the open plains you may see hartebeest, gemsbok and springbok as well as lion, cheetah, kudu, giraffe, zebra and wildebeest amongst others. The timing of your visit is significant as the seasonal movement of wildlife varies throughout the year. Following the annual summer rains from

Safari Specialists – Botswana Adventure – Standard - 10 nights / 11 days

November to April, wildlife tends to disperse away from permanent surface water, moving to richer pastures in the Kalahari where rain-filled pans sustain them during the peak breeding season. The Makgadikgadi becomes the summer headquarters for thousands of zebra and blue wildebeest. However during the dry winter months after the outlying pans have dried up, the main herds of elephant, zebra and wildebeest (and their accompanying predators) are found in the corridor of the Boteti River.

Days 4 & 5: SANGO SAFARI CAMP, Khwai Community area adjacent to Moremi Game Reserve (fully inclusive)

Travel time: Road transfer Meno – Maun approx 2 hours followed by Air transfer Maun – Khwai approx 30 minute flight

After a leisurely breakfast you transfer back to Maun ** there may be a short waiting time in Maun **. Connect to your light aircraft flight to Khwai Community area where you stay for 2 nights on a fully inclusive basis for some action packed wildlife viewing in one of the Okavango Delta's best big game areas.

Please note that the flight is booked on a 'seat rate' basis and therefore flight times are not scheduled until the day prior to flying, the lodge management will arrange your activities and transfers accordingly. Please note that there is a strict luggage restriction on all light aircraft flights of 15kg per person in soft bags, plus hand luggage.

Sango Safari Camp is nestled in the shade of the trees overlooking the Khwai River. Situated on the outskirts of the traditional village of Khwai and on the border of Moremi Game Reserve, the camp offers guests the perfect base from which to explore the wildlife and culture of this unique habitat.



This intimate safari camp is named for the Sango Family, some of the original inhabitants of the Khwai area, and now part owners of the camp. Guests will have the chance to learn firsthand about the unique lifestyle and experiences that come from living and growing up in one of the most wildlife rich areas of Botswana. Accommodating 12 guests in 6 en-suite meru tents, Sango Safari Camp is designed in the style of the classic tented safari camp of days gone by. The previous open-air bucket showers were upgraded to a solar water heating system in each tent to capture the heat from the strong African sun.

The main area is comprised of an open lounge/dining tent and an elevated pool deck as well as a viewing platform from which to enjoy views across the Khwai River and floodplains. With its hand crafted furnishings and classic styling Sango Safari Camp aims to rekindle the atmosphere of the luxury mobile safari camp, successfully blending the rustic with the luxurious.

With the Khwai River forming a natural border between the world famous Moremi Game Reserve and Khwai Concession, animals can travel freely through this vast unfenced wilderness. Situated on the river overlooking the Moremi and with access to both these magnificent wildlife areas, Sango Safari Camp is focused on delivering an exceptional wildlife experience to our guests. The camp's location allows guests to take advantage of a host of wildlife activities which include open vehicle game drives both in the Moremi and in the Khwai concession area, guided bush walks and night drives. In addition mokoro excursions on the Khwai River are offered subject to water levels and safety.

With a combination of permanent water, seasonal floodplains, open grasslands, riverine forests, and dry woodlands this incredibly rich habitat supports a diversity and abundance of mammals and birds rarely matched in northern Botswana.

Sango Safari Camp filled a much needed gap in the Okavango Delta – providing an affordable option that is actually in a good game viewing area. Sango has been successfully operating for nearly two years and has become a favourite with guests. This is a tribute to the relaxed and friendly atmosphere created by Judge and his team that is complemented by the professional operating support system provided by their Maun base. If only they had more tents as it is so often fully booked- you need to book in advance!

AREA DESCRIPTION – KHWAI COMMUNITY AREA

The Khwai Community area lies just north of the Moremi Game Reserve and is easily accessible via the North Gate of the park. Although the Khwai area is not officially part of the Moremi Game Reserve it can be seen as an extension of it as there are no fences and animals are free to roam. Khwai was established by the former inhabitants of the reserve (the River Bushmen) and is now managed by the community through the Khwai Development Trust. The wildlife experience in Khwai is the same as inside the reserve with the key advantage being the freedom to participate in walking safaris, off-road driving and night drives as the area is not governed by National Park rules.

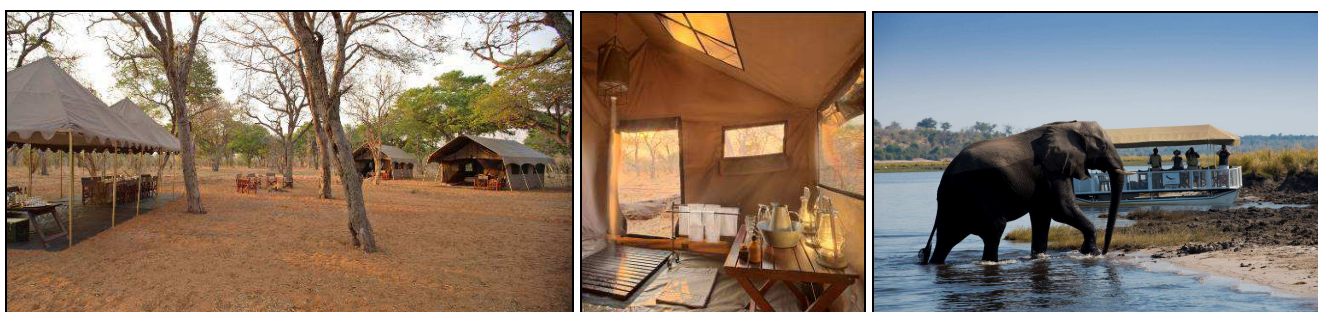
The vegetation is varied, with dry land complemented by permanent and seasonal swamplands, resulting in an excellent diversity of both wildlife and birdlife. Game is more concentrated around the permanent water during the dry season (Apr - Oct) with it becoming very hot in the later months. The rainy season (Nov - Apr) invigorates the lush scenery with wild flowers, dramatic thundershowers, spectacular sunsets and the birthing season brings great predator and prey interaction.

**Days 6 & 7: CHOBE UNDER CANVAS,
Chobe National Park (fully inclusive)**

**Travel time: Sango – Kasane airport: Approx 75 min flight
Followed by Kasane Airport – Chobe Under Canvas
approx 2 hours drive (depending on campsite location)**

After breakfast and a possible morning activity (flight time permitting) light aircraft transfer to Kasane Airport where you will meet up with a representative from Chobe Under Canvas. From here you road transfer to Camp, where you spend the following 2 nights on a fully inclusive basis.

Chobe Under Canvas is essentially a mobile camp, situated at secluded private campsites in the game rich Chobe National Park - home to some of the largest elephant herds on the African continent and the only place in Botswana to see Puku and Chobe bushbuck. The small camp, hosted by a friendly team and under the guidance of a highly experienced professional guide, offers an exclusive safari experience with exceptional wildlife sightings.



Chobe Under Canvas consists of five spacious Hemingway style tents, each with double beds, en-suite bathrooms, separate flush toilets and steaming hot bucket showers. The main camp area hosts a comfortable marquee for dining, meeting for a pre-dinner drink, or just for whiling the time away between safaris with a good book and frosted beer or glass of chilled wine.

Complete with welcoming camp staff, delicious home-cooked meals cooked over the coals are shared around a blazing fire, and traditional bush dinners served under the stars, Chobe Under Canvas offers a real escape - no mains electricity and no running water. The simplicity of camping and the relaxing solitude of the African wilderness offers guests the perfect opportunity to unwind and rejuvenate far away from modern-day pressures.

From your private wilderness campsite base, you set out for morning and afternoon game drives with your professional guide and enjoy a boat cruise on the Chobe River. One of the best ways to end a day of safari in Chobe National Park is sipping on a cocktail while watching an African sunset over the still waters of the Chobe River from the comfort of one of the specially designed riverboats. The sundowner cruise offers a great opportunity to see wildlife up close as buffalo come out of the shade to graze in the cooler evenings and elephants wade in the river. Chobe is also known for great sightings of the majestic sable and roan antelope with their impressive horns. The game drives are undertaken in a semi-open 4x4 safari vehicle with fridge and 12V power provided.

AREA DESCRIPTION - CHOBE

The Chobe River Front is a remarkable wildlife area due to the permanent water source of the Chobe River. However its accessibility from Kasane and neighbouring towns of Victoria Falls and Livingstone has created quite a busy tourist area with larger hotels and lodges than you find in the more remote Okavango Delta. The spectacle of all the animals coming to drink and frolic at the water's edge is one to behold, particularly in the dry season (May - Oct) where water is scarce away from the river. It is an area famous for its abundance of elephants, a variety of predators and, in addition, you are likely to see herds of buffalo and possibly even roan and sable antelope. In the rainy season (Nov - Apr) the game is much less concentrated at the river as the wildlife spread throughout the greater area of Chobe National Park due to availability of surface water from nearby pans. This assists the vegetation on the river banks in recovering from the massive herds that are attracted to the area in the dry months. The summer rains bring beautiful wild flowers, exquisite scenery, impressive bird life and an abundance of young animals usually born around November/December. The spectacular Chobe sunsets alone are worth a visit to the area.

Please note that activities are restricted within the national park in accordance with government rules and regulations: these include no driving off-road, no walking and no driving after dark.

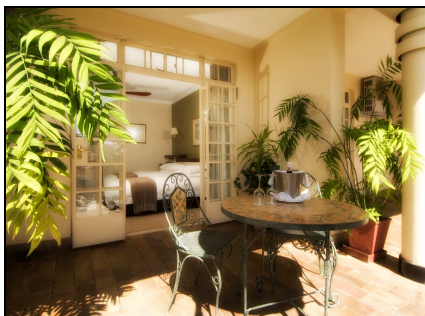
**Days 8: ILALA LODGE, Victoria Falls, Zimbabwe
(bed and breakfast)**

**Travel time: Chobe Under Canvas – Ilala Lodge
approx 4 - 5 hour road transfer**

After breakfast and a possible morning activity, road transfer out of the Chobe National Park and on to Kasane airport where you will meet up with a Wild Horizons representative. This transfer is part game drive and will take approximately 2 hours depending on the Chobe camp location. You will then transfer from Kasane airport, through the border and into Zimbabwe and then on to Ilala Lodge. From the border to Ilala is approximate 2 hour transfer depending on border delays.

You are booked into Ilala lodge for 1 night on a bed and breakfast basis and your afternoon is at leisure, activities can be pre-booked on request.

Ilala Lodge is situated close to the Victoria Falls, Zimbabwe as well as to the town centre. Wild animals are often seen grazing the hotel lawns as the National Park borders the front of the property.



Ilala Lodge was extended in 2015 to add an additional wing of deluxe rooms. The original hotel offers 32 rooms: 26 standard twins, 6 standard king and 2 standard suites. The new wing has 20 rooms: 8 deluxe twins, 12 deluxe king and 2 executive suites. All rooms have an en-suite bathroom with a separate shower, air-conditioning, overhead fan, in room safe and satellite TV. Deluxe rooms have the additional facilities of a coffee machine and mini bar fridge.

The standard rooms are spacious with railway sleeper teak furnishings and patio doors leading onto either an open lawn or a balcony where you are afforded a view of the Victoria Falls. The deluxe rooms are more modern and spacious.

There is an à la carte restaurant which serves breakfast, lunch and dinner and offers a comprehensive wine list and cocktails. Dining outside under the African night sky amidst the sound of the mighty waterfall makes for a very romantic evening.

All activities are optional and can be pre-booked in advance or arranged direct with the hotel's booking desk or one of the many activity operators in town. Victoria Falls offers a multitude of activities to suit every traveller. Some of the most popular are elephant back safaris, exploring the local craft market for African treasures and taking a helicopter flight over the mile-wide Victoria Falls, guided walking safaris and game drives in Victoria Falls National Park. Adventure activities include bungi jumping, abseiling and the Gorge swing as well as white water rafting or canoeing on the Zambezi, or horseback riding in wildlife areas.

AREA DESCRIPTION – VICTORIA FALLS

Victoria Falls town lies on the southern bank of the Zambezi River at the eastern end of the Victoria Falls. It is a lovely tourist town, which is easy to explore on foot and which offers a wide range of activities, from the challenge of white water rafting and bungi jumping, to the awe-inspiring elephant back safaris and sunset cruises. It has something for everyone

The Victoria Falls are one of the Seven Wonders of the World and is the largest sheet of falling water on earth - a spellbinding and mesmerizing spectacle. The sheer mass of water cascading down the 100m drop across nearly 2km makes a thunderous roar and creates a magnificent spray of water that can be seen for miles - hence the local name 'mosi oa tunya' meaning 'the smoke that thunders'.

Access to Victoria Falls is within easy walking distance from the town centre. Water flow over the falls varies throughout the year. The river's annual flood season is February to May when the spray can reach a height of over 400m, this is spectacular from above but it makes it very difficult to see the falls at ground level as it is under a heavy shower/mist. Water levels start dropping in August and are at their lowest October - December when much of the rocky face becomes dry. At times of low water, the falls are best viewed from the Zimbabwe side or from Livingstone Island.

Days 9 & 10: PIONEERS CAMP, Upper Zambezi National Park, Zimbabwe (fully inclusive)

**Travel Time: Ilala – Pioneers
Approx time: 2 hours road transfer**

After breakfast you are collected at a pre-appointed time at Ilala reception by a representative from Pioneers Camp and transfer to camp. Lunch will be available depending on your arrival time and an afternoon activity is included.

Set under large, shady trees, along the shores of the Zambezi River Pioneers Camp offers a beautiful setting to relax and enjoy the wilderness, peace and beauty of the Zambezi National Park, on a lovely quiet stretch of Zambezi River only an hour away from Victoria Falls.



The camp comprises of six luxury en-suite tents, a lounge and dining tent. Each tent is carefully positioned to command fabulous views of the river, but with optimum privacy. The eco-friendly camp uses solar-lighting, solar-heated water and proper waste disposal – without compromising on quality or overall guest experience. Flushing toilets and running water showers in bathrooms.

This area has a healthy and increasing game count and with the Zambezi River along the park's boundary – there are many activities to enjoy. These include: fishing, canoeing, sunset cruises as well as guided walks. It is also close to Victoria Falls so you can easily go into town to enjoy some other adventures. The camp includes a scheduled transfer service daily but for specific activities you may need to book a private transfer at additional cost. Regularly sighted wildlife in the Zambezi National Park includes large herds of elephant, buffalo and a great mix of other game such as sable, kudu, impala, lion, leopard, warthog, and even wild dog.

Day 11: End of Arrangements Victoria Falls Airport

**Travel time: Pioneer Camp – Victoria Falls Airport
Approx 1.5 hours road transfer**

After breakfast and a morning activity (time permitting) you will be transferred to Victoria Falls Airport for own onwards travel arrangements.

Special Notes

Shared Transfers and Activities

Road, boat, air transfers and activities are quoted on a seat basis (on a shared basis and NOT private) unless otherwise requested or specified. Private charters/transfers can however be requested at an additional cost.

Safari Specialists – Botswana Adventure – Standard - 10 nights / 11 days

Passengers may have various stops en-route to a destination adding to the duration of the transfer. International flight connections are accounted for in the daily schedules.

On shared transfers all the flight times are arranged a day before travel to avoid endless schedule changes. The transfer or charter company reserves the right to specify departure and arrival times.

Weight and Luggage restrictions

Please advise upon requesting a quotation where a traveller **weighs over 100kg**, as well as at time of confirming the booking, as it may be necessary to cost in an additional seat on internal flights for the passenger's safety and comfort.

Luggage is restricted on flight transfers to **20kg per person in soft bags**, which includes all hand luggage and camera equipment. Please refer to your itinerary notes, as in some instances, and in some countries, such as Zambia and Zimbabwe this limitation is decreased to 15kg per person. Please note that luggage in excess of the above restrictions shall result in additional costs for transport and/or storage and should be arranged in advance. Note that laundry can be done on a daily basis at most camps and lodges.

Health

Please confirm that all Clients are medically fit, in good physical and mental health and that there is nothing which renders him/her unfit to undertake the tour at the time of booking. Any Client with a pre-existing medical condition or illness must declare the true nature of such conditions to the Company before the commencement of the tour. The Client is responsible for attending to any medical condition which he/she may have and must consult with his/her physician in respect of all medical conditions which might be affected by his/her participation in the tour, activities or associated activities.

The Client accepts that certain areas included in the tour are malaria-infected areas and that he/she should take reasonable anti-malaria precautions.

Insurance

Travel, cancellation and health insurance are highly recommended for all Clients.

Visas/Passports/Travel Documents

The Client is solely responsible to ensure that his/her passports, visas, insurance cover and vaccination certificates, (and any other travel documents and/or requirements of any nature whatsoever) are valid for the duration of the tour and in the countries to be visited.

Arrival and Departure Details

It is imperative that we have the correct International/Regional arrival and departure details for the clients in order to plan the itinerary and ensure efficient onward transfers. Costs may be incurred if these details are not given on quotation, or if they change subsequently.

TERMS AND CONDITIONS

We require that you have read and understood our full **SAFARI INFORMATION** and **TERMS AND CONDITIONS** before confirming the itinerary and commencing the safari. However we would like to highlight the following important notes.

EXCLUSION OF LIABILITY

In terms of the trading conditions, and any contract(s) concluded pursuant hereto, the Company acts as a booking agent only, for and on behalf of the Client in procuring services. The Company utilizes the products of various travel Subcontractors. The Company does not provide any direct services to the Clients as its services are limited to procuring and compiling tour packages for its clients.

While the Company makes every effort:

- to engage quality Subcontractors among the airlines, hotels, tour operators and other service providers to constitute the itinerary of the tour; and
- to ensure that the various services that constitutes the tour package will be carried out efficiently and as advertised;

it does not have direct control over the provision of services by Subcontractors and shall not be liable for *inter alia* any loss, damage, injury, additional costs, delay or irregularity that may be occasioned by an error or default, act or omission of any Subcontractor in carrying out the logistics of the tour package, or associated activities.

Payment Terms

Bookings must be confirmed in writing by fax, email and/or registered letter and the deposit payment must be received before the Company can confirm in full to all subcontractors. Once the deposit is received and the booking is confirmed, all terms and conditions apply and our cancellation policies will be in immediate effect.

By confirmation of the booking, the Client acknowledges that all terms and conditions of the Company have been provided and accepted.

The full amount of the tour is payable not less than 60 days prior to the date when the tour commences. In the event that a booking is not paid in full as per the above payment terms the Company reserves the right to refuse the Client(s) participation in the tour, and the client will be liable for any applicable cancellation fees.

CANCELLATIONS

All cancellations should be made in writing and will only be deemed effective upon acknowledgment of receipt by the Company.

Cancellations will be subject to the following penalties:

- 20% of the total booking fee shall be payable immediately upon confirmation.
- 50% of the total booking 45 - 90 days prior to commencement of the tour.
- 100% of the total booking 44 days or less prior to the commencement of the tour.

Standard Cancellation fees shall apply in instances of postponed departure dates.

RESERVATIONS

Please be advised that for any quotes, no provisional bookings have been made unless otherwise specified by your consultant. Accommodation is subject to availability at the time of the booking.

Costs quoted are subject to change at any time due to *inter alia* excessive exchange fluctuations, fuel costs, taxes, levies, government regulations, rate of exchange, and factors that are imposed upon us by our suppliers and government that are beyond our control.

Provisional bookings will be held for a period of 12 days (unless otherwise advised), where after confirmation of the booking and payment of a 20% non-refundable deposit will be required to secure the booking, failing which the booking will be cancelled.

Clients are to advise the Company at the time of requesting a quotation, and of making a booking, of the ages of all children (under the age of 21 and as at the time of travel) that will be participating in the tour, together with their date of birth, as not all lodges accept children, and there may be restrictions or conditions applicable. Some properties will require that children under the age of 18 share with an adult.

It is recommended that optional additional activities should be requested at the time of requesting a quotation and/or making the booking, specifically in Livingstone or Victoria Falls e.g. sunset cruise, to guarantee availability of such activities.

All Clients should allow a minimum 2 - 3 hours connection time in Johannesburg for international flights. Please ask your consultant to check your flight details before booking.

With confirmation of the booking the Client accepts that the tour carries inherent risks, and that the Clients voluntarily assume all risks, which are associated with the tour. All Clients will be required to sign indemnities at the various camps/lodges/service providers, and abide by the Operators Code of Conduct in order to ensure their safety.

On confirmation of a booking, the Company requires personal information with respect to each and every Client e.g. Medical Conditions, Dietary requirements, Travel Insurance details and Emergency contact details. Please complete the Booking form on confirmation of a booking. By choosing not to complete and submit this information to the Company the Client will compromise the Company's response time in the event of an emergency.

With confirmation of the booking the Client confirms that he has read, understood and accepted the terms and conditions of the Company and its Subcontractors.